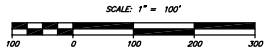


CERTIFICATION

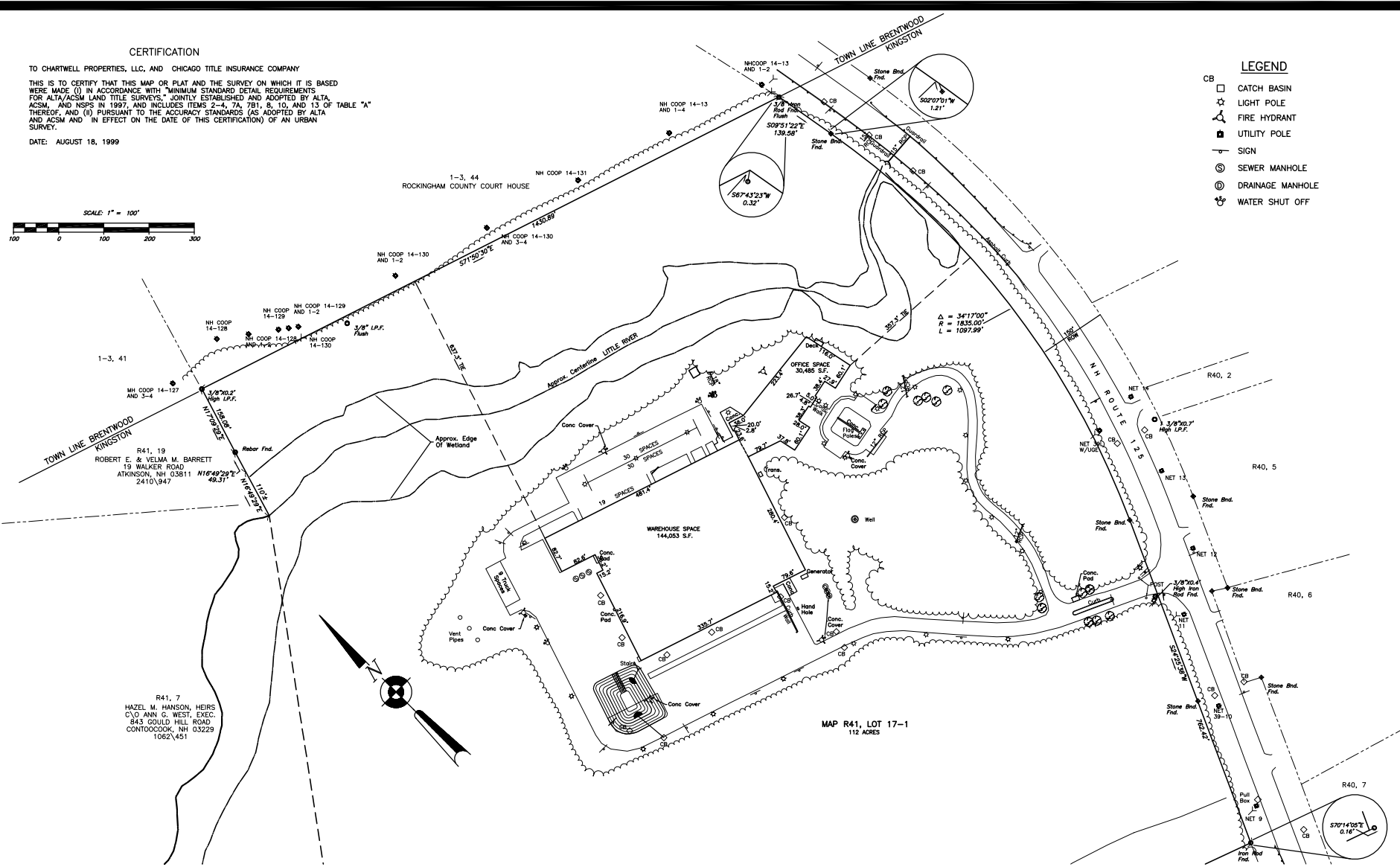
TO CHARTWELL PROPERTIES, LLC, AND CHICAGO TITLE INSURANCE COMPANY

THIS IS TO CERTIFY THAT THIS MAP OR PLAT AND THE SURVEY ON WHICH IT IS BASED WERE MADE (i) IN ACCORDANCE WITH MINIMUM STANDARD DETAIL REQUIREMENTS FOR ALTA/ACSM LAND TITLE SURVEYS, JOINTLY ESTABLISHED AND ADOPTED BY ALTA, ACSM, AND NSPS IN 1997, AND INCLUDES ITEMS 2-4, 7A, 7B1, 8, 10, AND 13 OF TABLE "A" THEREOF, AND (ii) PURSUANT TO THE ACCURACY STANDARDS (AS ADOPTED BY ALTA AND ACSM AND IN EFFECT ON THE DATE OF THIS CERTIFICATION) OF AN URBAN SURVEY.

DATE: AUGUST 18, 1999



- LEGEND**
- CB CATCH BASIN
 - ☆ LIGHT POLE
 - ⊕ FIRE HYDRANT
 - ⊕ UTILITY POLE
 - SIGN
 - ⊙ SEWER MANHOLE
 - ⊙ DRAINAGE MANHOLE
 - ⊕ WATER SHUT OFF



1-3, 44
ROCKINGHAM COUNTY COURT HOUSE

NH COOP 14-131

NH COOP 14-130 AND 1-2

NH COOP 14-129 AND 1-2

NH COOP 14-128 AND 1-2

NH COOP 14-127 AND 3-4

1-3, 41

R41, 19
ROBERT E. & VELMA M. BARRETT
19 WALKER ROAD
ATKINSON, NH 03811
24101947

R41, 7
HAZEL M. HANSON, HEIRS
C/O ANN G. WEST, EXEC.
843 GOULD HILL ROAD
CONTOOCCOOK, NH 03229
1062451

MATCH LINE

HOLDEN ENGINEERING & SURVEYING, Inc.

19 Stage Pond Site
PO Box 482 Concord, N.H. 03302
(603) 255-4149

19 Southside Drive
Bedford, N.H. 03023
(603) 472-3078

ALTA SURVEY OF LAND OF
ROBERSHAW CONTROLS COMPANY
KINGSTON, NH

Date	Revisions Description	Dr. By	Chk. By	Book	Page	Date
8-18-99	UPDATE PER ATTORNEYS REQUEST			1036	12	7-7-13
						Scale: 1"=100'
						Dr. By: WA Ck By: RS
						Job No. 9911002
						Sheet no 2 of 2